

IncoNet EECA

TASK 6.1 - Results of the on-line SWOT survey

Désirée Pecarz

ZSI – Centre for Social Innovation

GA meeting, Vienna 12 –13 February 2009

Brief overview of objectives and procedure

Period:

01/2008
–
12/2010

Partners:

ZSI
DLR
ICBSS

Objectives:

- To identify the **internal strengths** inherent in the current development of IncoNet EECA as well as the **external opportunities** that may have positive impact on the project, and to develop strategies for exploiting them.
- To identify the **internal weaknesses** inherent in the current development of IncoNet EECA as well as the **external threats** that may have negative impact on the project, and to develop strategies for overcoming them.
- To enhance reflection of individual WPs on the quality of their works.

Brief overview of objectives and procedure

Period:

01/2008
–
12/2010

Partners:

ZSI
DLR
ICBSS

Procedure:

- End 2008 – a **Questionnaire** with set of indicators for the monitoring of project was provided to the whole Consortium.
- **On-line submission** of answer was enabled
- First analysis of the results provided today
- **Periodical submission of questionnaire on a 6-month basis** for further analysis and discussion at next MB meetings
- **End of 2nd project year, some phone interviews** will complement the SWOT analysis of INCONET EECA.
 - >A respective **REPORT (D 6.1)** will be presented at Mid-term Review meeting and finalized by February 2010.

Type of questions

Categorization of listed items as ***strength or weakness*** of the current development of the project with rating according to the following scale:

very weak > weak > average > strong > very strong

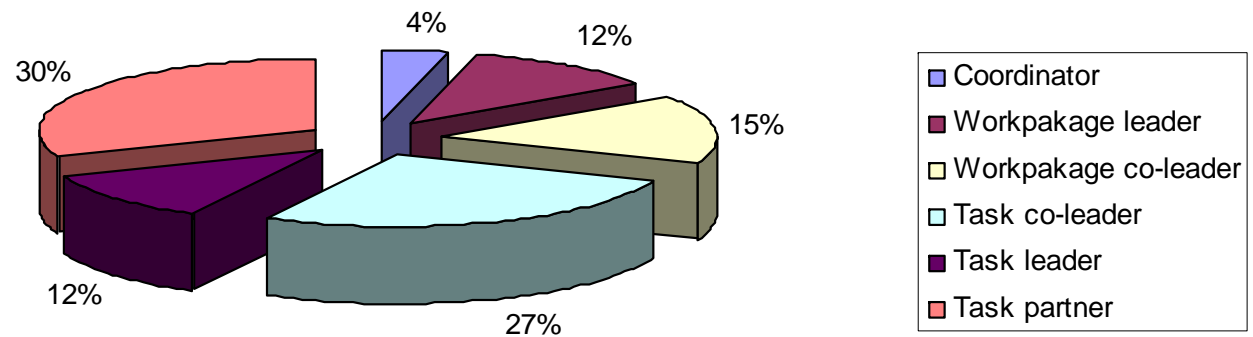
(remarks can be added for better explanation of rating)

- **PROJECT GENERAL WORK ENVIRONMENT AND INTERNAL COMMUNICATION** (Common project vision, Working atmosphere, Communication between participating partners, Consistency of information, etc.)
- **PROJECT MANAGEMENT** (Complementarity of the consortium, Overall project-WPs-Tasks management, Decision-making process/ Consensus-drawing process, Impact of personnel change on project performance, etc.)
- **ORGANISATION OF ACTIVITIES AND QUALITY** (Division of labour among the partners, Synchronization of related processes, Punctuality of deliverables and milestones, Quality of analytical deliverables, Quality of minutes and agendas, Internal peer-review, etc.)
- **PROJECT POTENTIAL CONTRIBUTION** (Overall innovative potential of the project, Capacity to enhance relations between target regions, etc.)

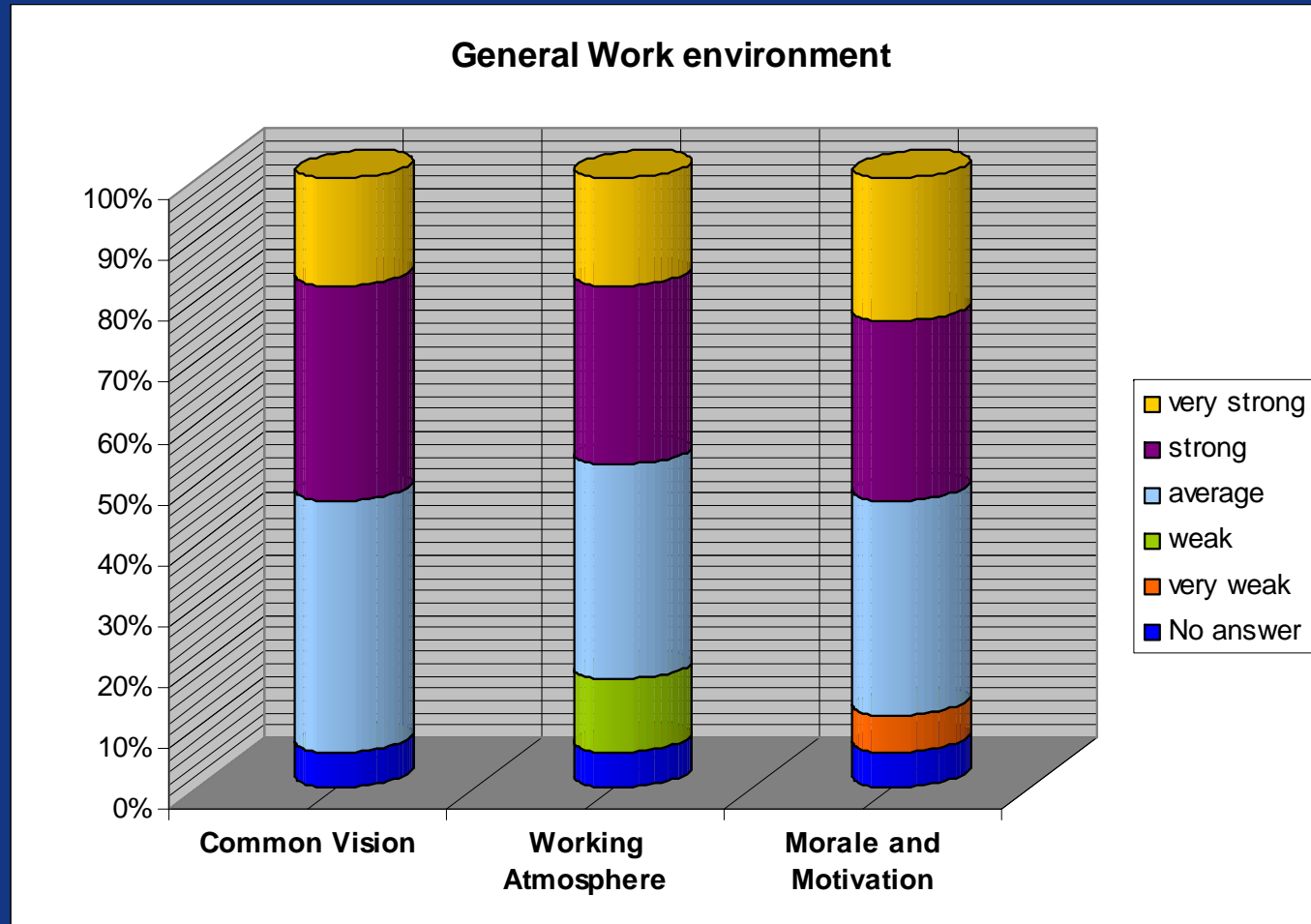
The Respondents

- **22 questionnaires received** (13 full responses, 9 responses not completely filled out)

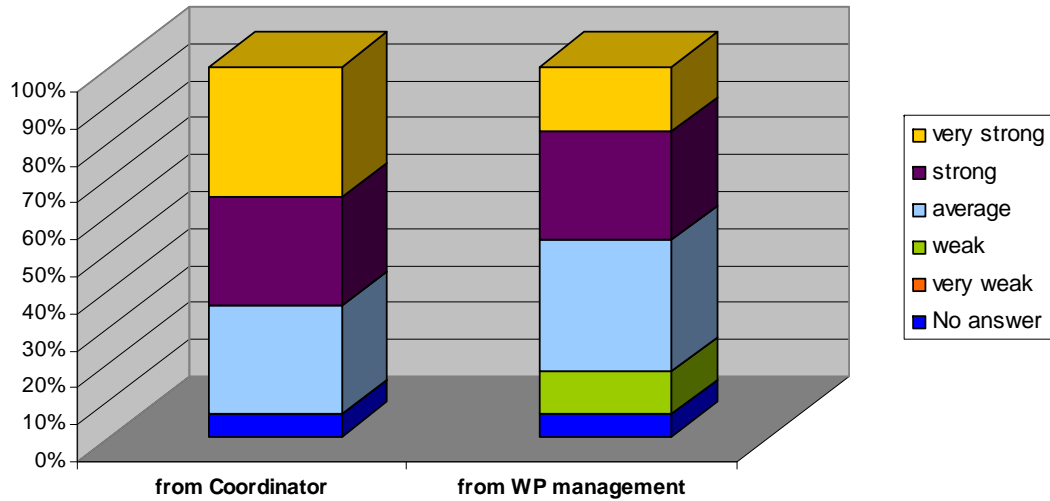
Type of respondents



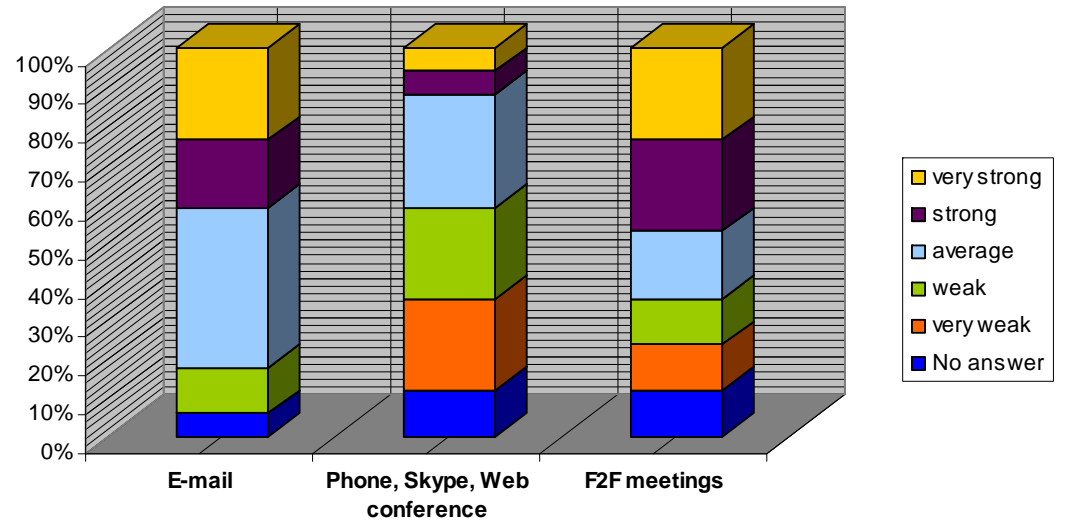
General work environment



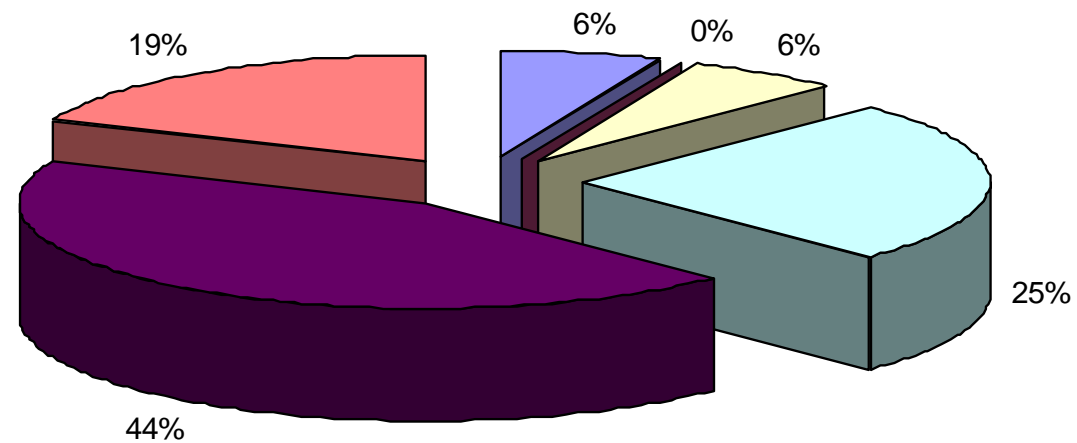
Consistency of information



Communication within consortium

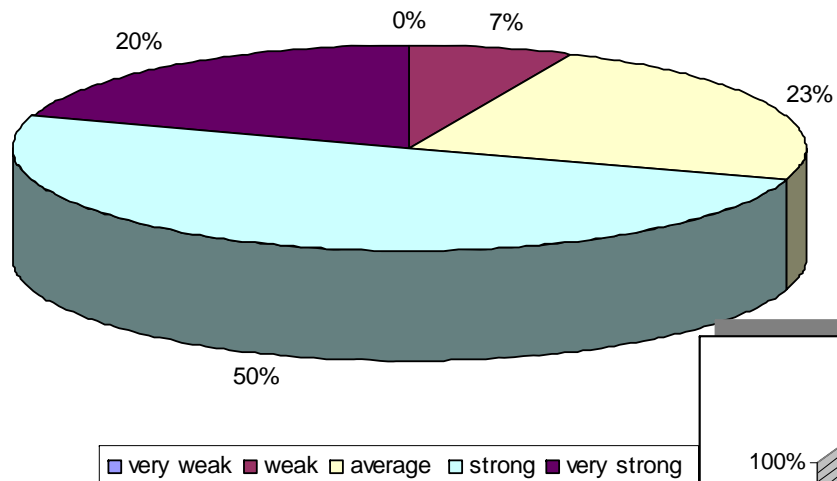


Overall project management by coordinator

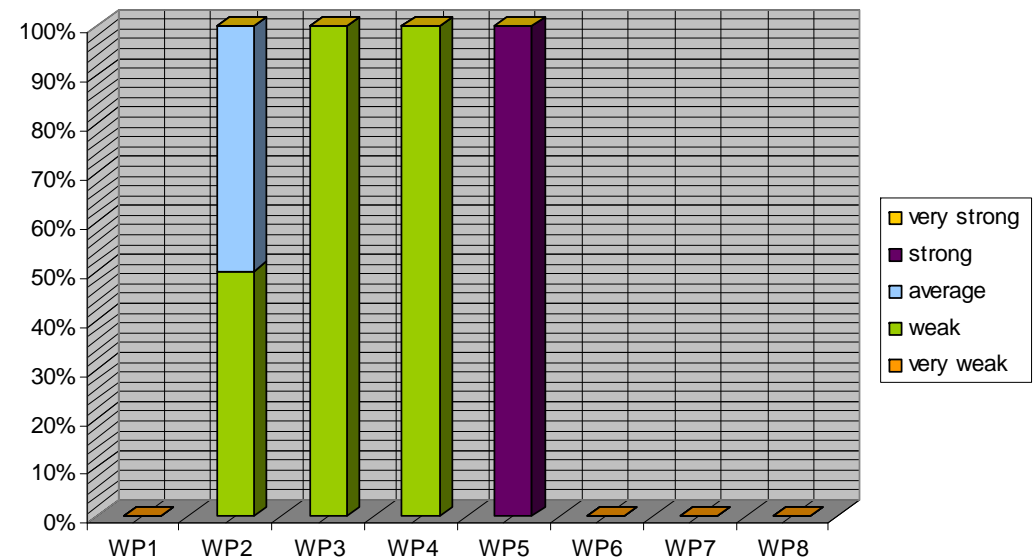


■ No answer ■ very weak ■ weak ■ average ■ strong ■ very strong

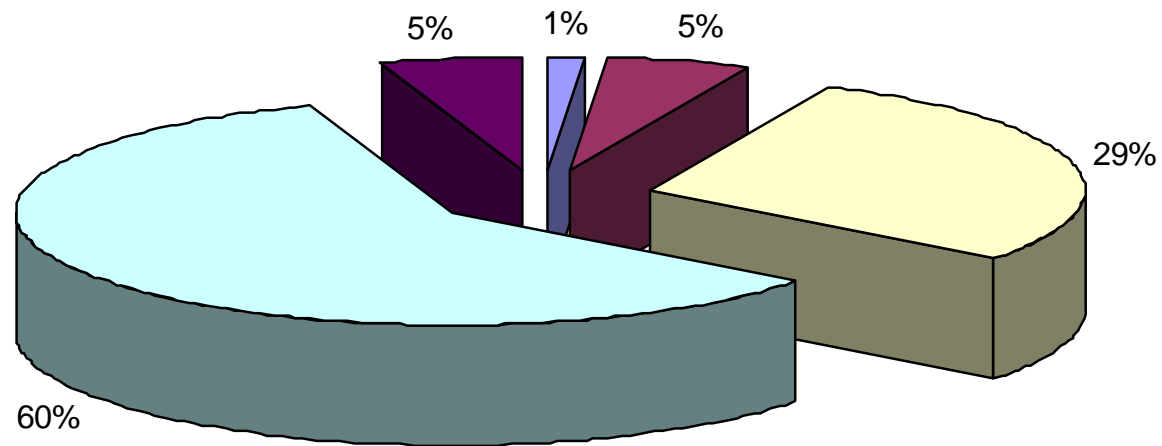
Overall quality of WP management



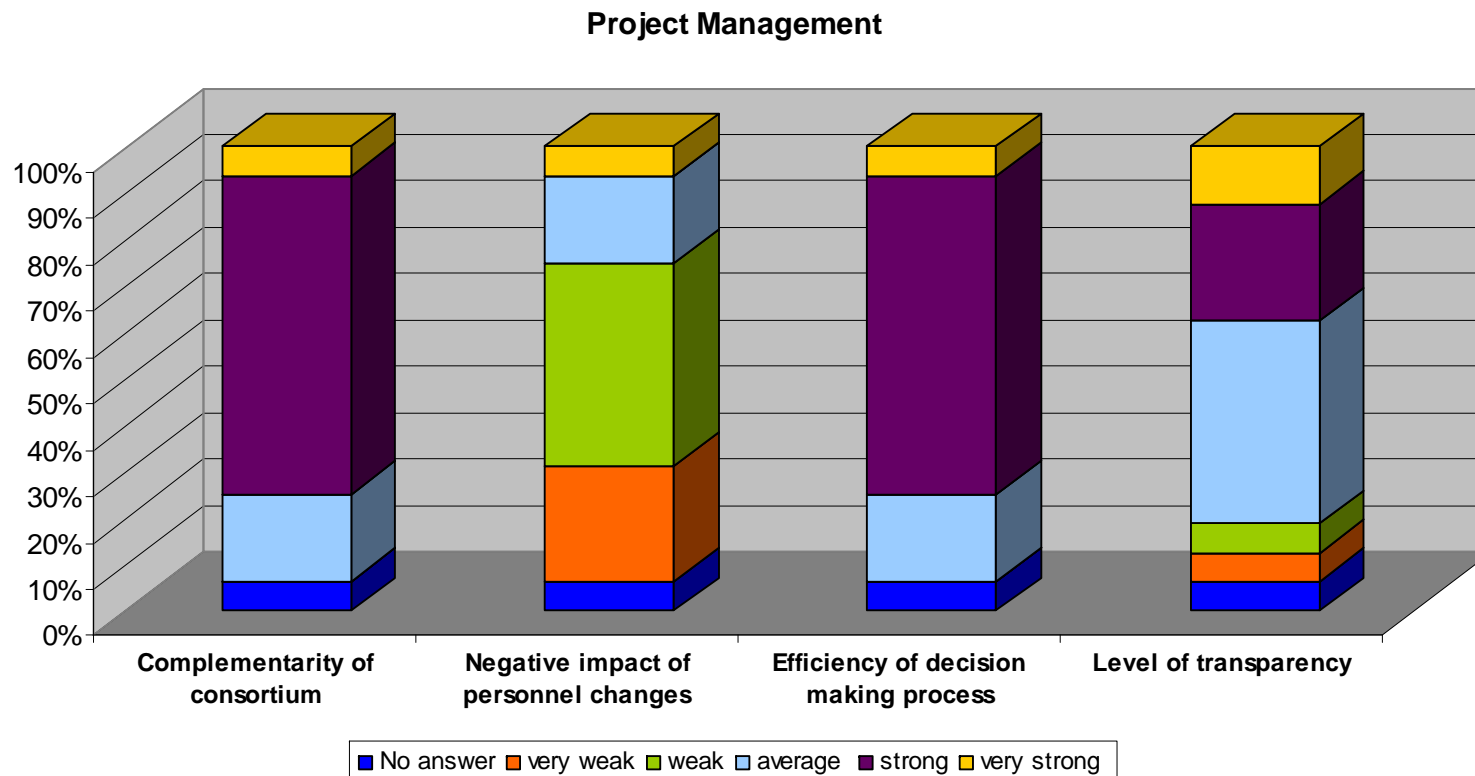
Division of labour at WP lead level



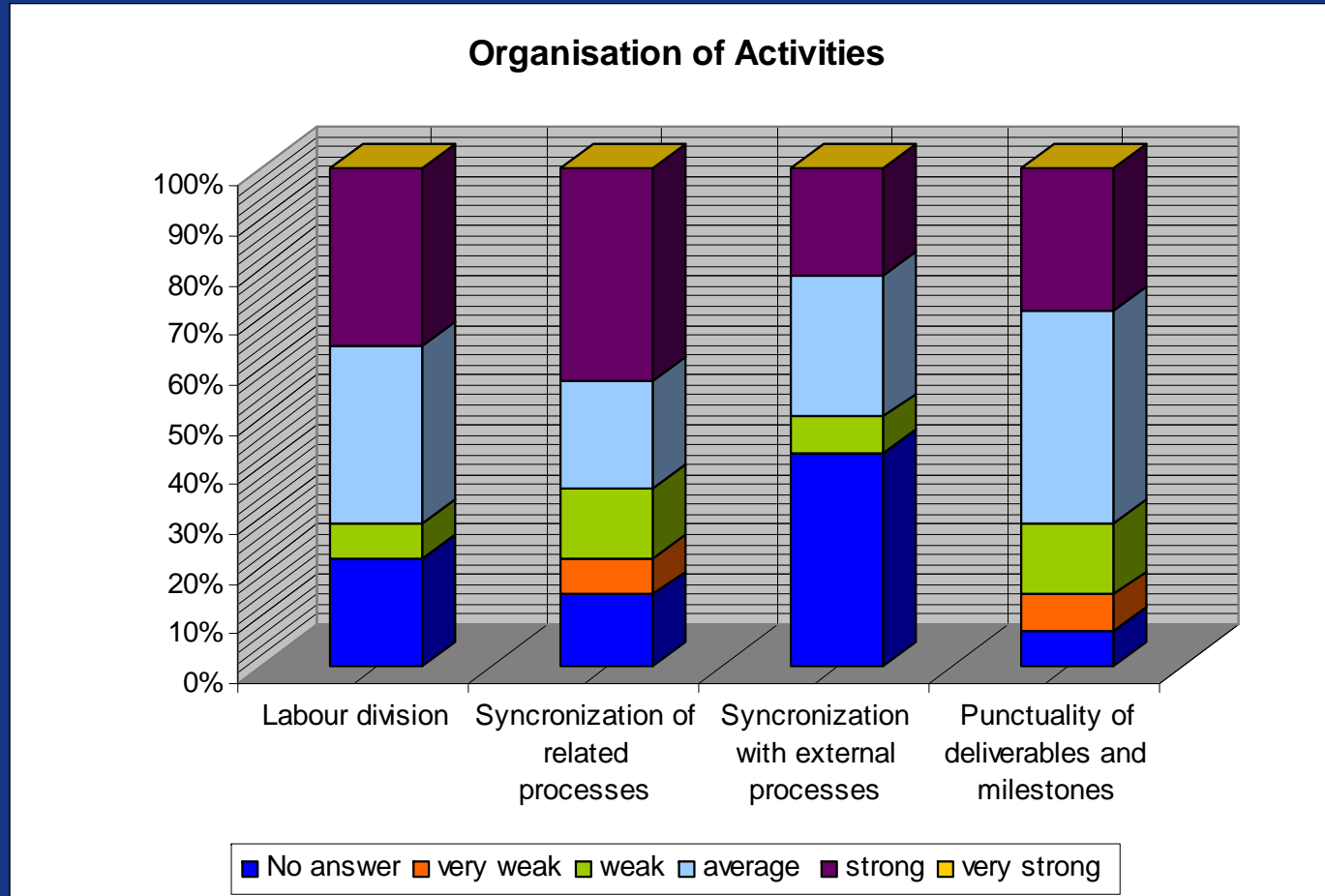
Task management



very weak weak average strong very strong

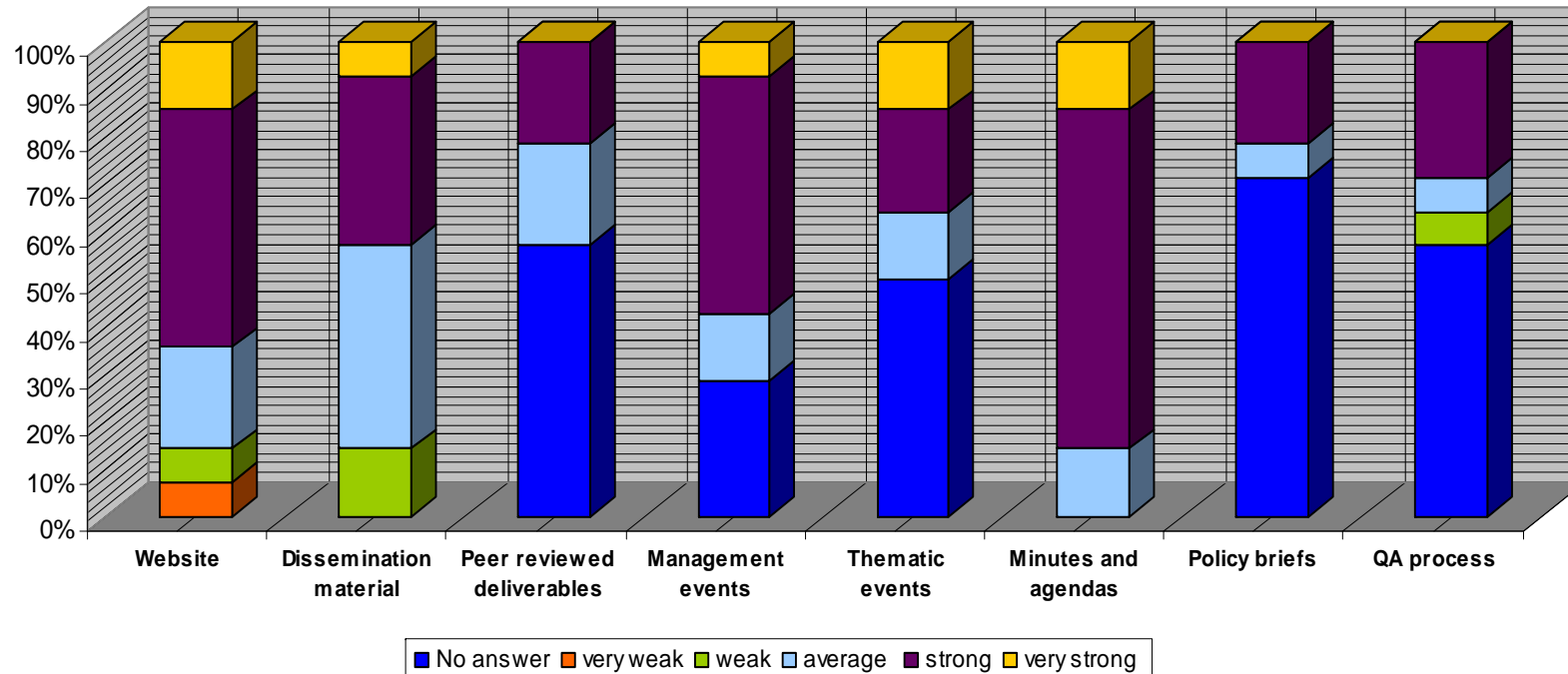


Activity organisation and quality 1/2

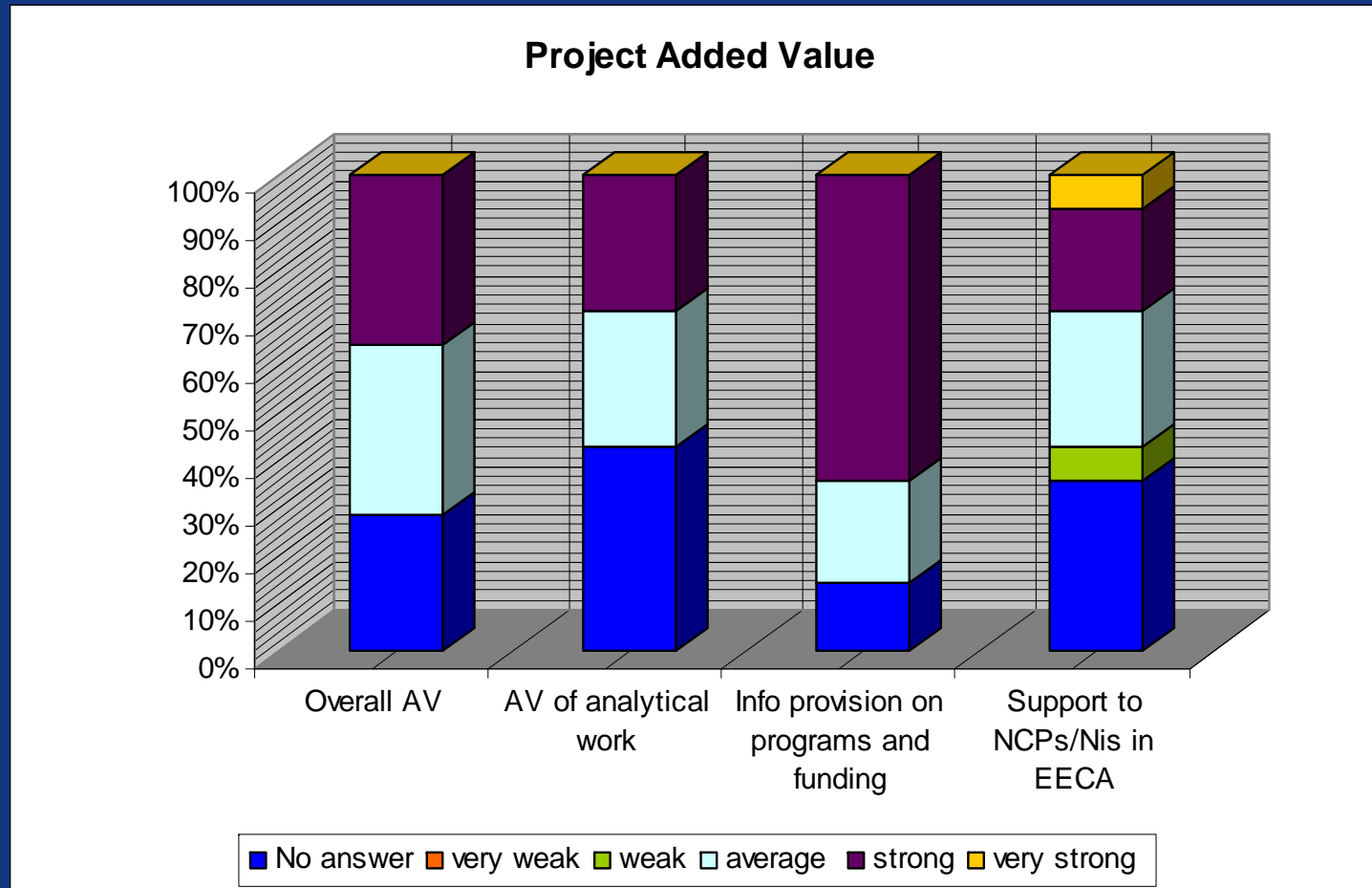


Activity organisation and quality 2/2

Overall quality

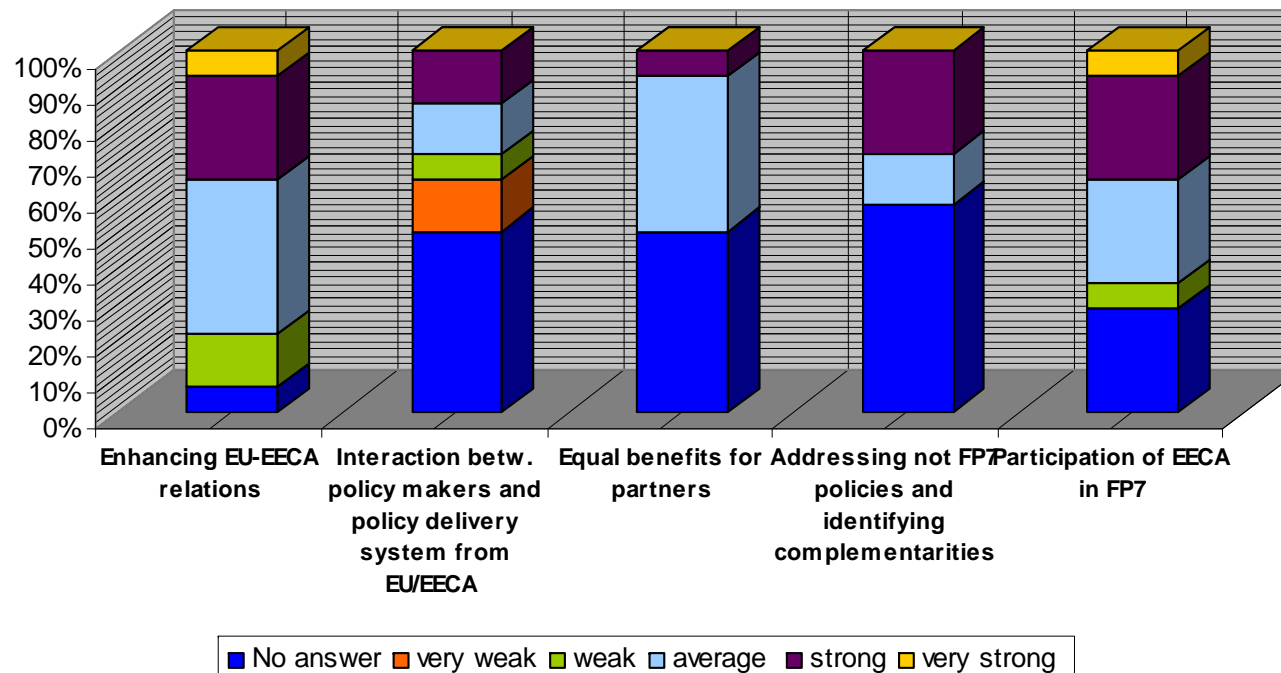


The contribution of the project 1/3



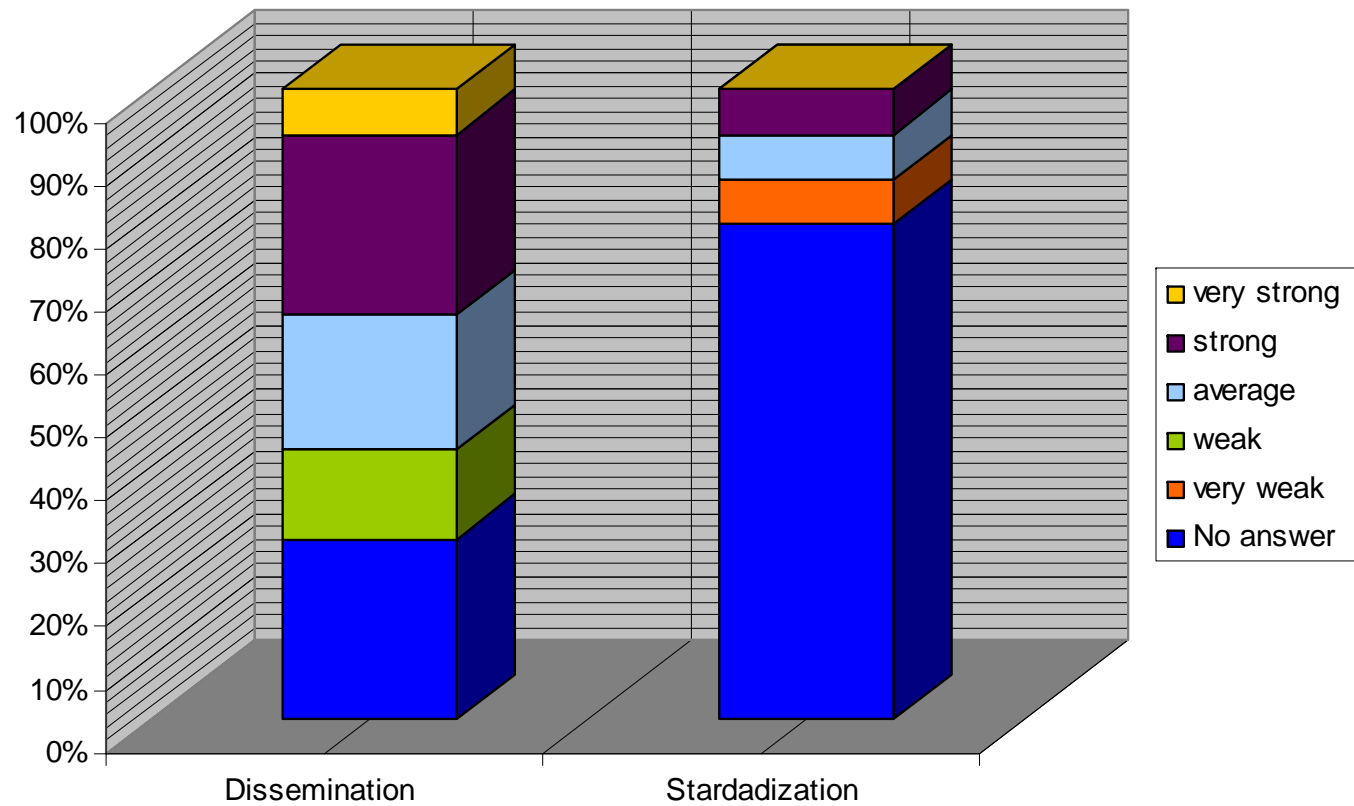
The contribution of the project 2/3

Achievement level



The contribution of the project 3/3

Presence of INCONET EECA and contribution to standards



S

- Website and portal suitable for an improved use, as well as other communication means
- Small countries have strong motivation to reach project objectives
- General consistency of information shared > trustworthiness
- Large appreciation for the qualities (negotiation, reliability, etc.) of the coordinator
- When the information from the coordination is perceived it is highly appreciated
- Self-criticism approach of partners and commitment to improve, Wish to bring an AV
- Appreciation for QAP and events
- Esteem of the decision making process

O

- Especially in small target countries no similar (or some few) similar projects act > high visibility and expectations
-

W

- Low general awareness on what's going on in the project, and other partner activities > diminish common vision
- Low internal circulation of information (at all levels)
- Smaller countries feel behind the front line, less considered
- Guidance from coordinator in some cases missing
- Low common sharing of responsibilities (WP level - Co-leading issue)
- Division of labour – activities as burden
- Static website and little dissemination material
- Delay in deliverable production

T

- Technical difficulties for on-line communications
- ...

Thank you for the kind attention!

Désirée Pecarz

ZSI – Centre for Social Innovation

Phone: +43 01 4950442 39

pecarz@zsi.at